
COLONIAL INTERMEDIATE UNIT 20
MINUTES OF MEETING
June 22, 2016

The June meeting of the Colonial Intermediate Unit 20 Board of School Directors was held on Wednesday, June 22, 2016 at Colonial Intermediate Unit 20, 6 Danforth Drive, Easton, PA. President Baird called the meeting to order at 7:45 PM at which time the Pledge of Allegiance was recited.

Members Present:

Dr. Michael Baird, Northampton (President)
Kenneth Brewer, Bangor
Robert Huffman, East Stroudsburg
Michelle Price, Easton
Kenneth Butz, Nazareth
Ethan Habrial, Pen Argyl
Daniel Wunder, Pleasant Valley
Dawn Wood, Pocono Mountain
Susan Baxter, Saucon Valley
Merlyn Clarke, Stroudsburg

Members Absent:

Eugene McKeon, Bethlehem (Vice-President) (Present for Executive Session Only)
Pam Lufty, Delaware Valley
Linda Baskwell, Wilson

Also Present:

Dr. Charlene M. Brennan, Executive Director
Mr. Hans Baltzersen, Assistant to the Executive Director for Management Services
Mrs. Dawn Hales, Secretary to the Board
Dr. Janice Cunningham, Director of Resolve Behavioral Health Services
Mr. Thomas Kalinoski, Director of Technology Systems and Operations
Mr. Anthony Pidgeon, Director of Human Resources & Research Services
Mr. Jon Wallitsch, Director of Fiscal Services
Mr. Christopher Wolfel, Director of Special Education
Mr. Christopher Fisher, Interim Administrator
John Freund, III, Solicitor

4. MOTION to Approve Agenda – June 22, 2016

On motion by Mr. Clarke, seconded by Mr. Huffman, and unanimously passed by voice vote, the Board approved the Agenda as presented with any additions and/or corrections noted.

5. MOTION TO Approve Minutes of Meeting – May 25, 2016

On motion by Mr. Butz, seconded by Mr. Wunder, and passed by voice vote the Board approved the Minutes of the May 25, 2016 meeting as presented.

6. MOTION TO Approve the Report of the Treasurer & Request for Approval of Bills – May 2016

On motion by Mr. Clarke, seconded by Mr. Butz, and unanimously passed by voice vote, the Report of the Treasurer for the month of May 2016 was approved and bills ordered paid.

7. ANNOUNCEMENT OF EXECUTIVE SESSION

Dr. Baird announced that an Executive Session was held prior to the meeting to discuss legal, personnel and litigation issues. Present were: Dr. Michael Baird, Eugene McKeon (left after Executive Session), Kenneth Brewer, Robert Huffman, Michelle Price, Kenneth Butz, Ethan Habrial, Daniel Wunder, Dawn Wood, Susan Baxter, Merlyn Clarke, Dr. Charlene Brennan, Hans Baltzersen, Anthony Pidgeon, Chris Fisher and Atty. Freund.

8. COMMUNICATIONS

a. Assigned Fund Balance – Mr. Hans Baltzersen

As per the Fund Balance Policy, I would like to notify the Board of the following designations:

Assigned Fund Balance

- Re-assign \$1,000,000 for potential settlement with the Education Association, Education Support Professional Association, and Transport Workers Union to future funding of actuarial calculated OPEB costs.
- An additional \$1,000,000 for future funding of actuarial calculated OPEB costs.

Mr. Baltzersen clarified that OPEB stands for “Other Post-Employment Benefits” for retirees.

b. PA Department of Education, regarding the LEA Fiscal Review – Patricia Hozella, Director ATTACHMENT 8.b

Dr. Brennan stated that she is very pleased. The State examined very closely, because they were being reviewed by the Federal DOE.

9. RECOGNITION OF VISITORS – There were not visitors

10. COMMENTS BY VISITORS (Agenda Items) – None at this time

11. REPORT OF EXECUTIVE DIRECTOR

a. Donald Marsh Memorial Fund

The recipient of the Donald Marsh Memorial Fund award is:

Kyle Miller
Northampton Area School District

A check in the amount of \$100 was presented during the Senior Awards at CIT on Wednesday, June 1, 2016

b. Mr. Christopher Wolfel – Overview of Special Education Services

c. PSBA Appointment of Voting Delegates for the PSBA Delegate Assembly Meeting

The 2016 Delegate Assembly will meet on Saturday, October 15, at the conclusion of regularly scheduled events of the main PASA-PSBA School Leadership Conference.

No one was appointed at this time. A reminder will be emailed to see if anyone would like to represent IU20 and will be placed on the August agenda.

ADDENDUM – ADD

d. Summary – 2016 Election of CIU20 Board Members ATTACHMENT 11.d

12. OLD BUSINESS

None at this time

On motion by Ms. Woods and seconded by Ms. Price and unanimously passed by voice vote, the Board approved the following Action Items (on Agenda) as presented with any additions and/or corrections noted:

On motion by Mr. Butz and seconded by Ms. Price and unanimously passed by voice vote, the Board approved the following Action Items (on Addendum) as presented with any additions and/or corrections noted:

13. ACTION ITEMS

1. Approval of Designation of Depositories

It is recommended the Board approve the following banks to be designated for use as depositories during the 2016-2017 school year:

1. National Penn Bank
2. Lafayette Ambassador Bank
3. Pennsylvania Local Government Investment Trust
4. Branch Banking and Trust Company (BB&T)

2. Approval of Facsimile Signatures

It is recommended that the CIU20 Board Officers be authorized to use facsimile signatures during the 2016-2017 school year. In accordance with the Uniform Facsimile of Signature of Public Officials Act, Act of 1961, July 25, P.L. 849, as amended 65 P.S. 301 facsimile signatures may be used.

3. Authorization to Solicit Quotations

It is recommended the Board authorize the Assistant to the Executive Director for Management Services to solicit quotations for investments during the 2016-2017 school year.

4. Approval of Year-end Budgetary Transfers

It is recommended the Board authorize the Director of Fiscal Affairs to make necessary budget transfers as of June 30, 2016 and to make budget transfers resulting from auditor's adjustments after the closing of the fiscal year.

5. Approval of Public Officials' Bonds

It is recommended the Board purchase public official bonds for the Secretary and Treasurer for the 2016-2017 fiscal year. The amount of coverage for the Secretary shall be \$10,000, whereas the coverage for the Treasurer shall be \$50,000. The cost of this coverage is to be provided by the Administrative Budget.

6. Board Acknowledgement – Completion of Induction

It is recommended the Board acknowledge the following individuals who have completed the CIU 20 Induction Program (PA Code, Title 22, Chapter 49.16), during the 2015-2016 school year:

Emily Frantz	June 22, 2016		
--------------	---------------	--	--

7. Award of Bid – Trash Removal Services

Bids submitted by the Northampton/Monroe/Pike County Joint Purchasing Board have been properly solicited, received, and tabulated for Trash Removal Services for a 22 month period ending June 30, 2018. The CIU20 participating district recommends the Colonial Intermediate Unit 20 Board of Directors award to the lowest bidder, Waste Management, who met all specifications. The Bid Tabulation is attached. **ATTACHMENT 13.7**

8. Approval – School Resource Office (SRO) Agreement

It is recommended the Board approve the SRO Agreement with Bushkill Township for the 2016-2017 school year at Colonial Academy. **ATTACHMENT 13.8**

9. Approval – Revised Budget

It is recommended the Board approve a revised 2016-2017 Act 89 Budget. **ATTACHMENT 13.9**

10. Approval – New Class / Positions

It is recommended the Board approve the following new class / positions:

- ~~a. Coordinator of Pupil Personnel Services (Level IV), effective July 1, 2016. This position is needed to support the Supervisor of Pupil Personnel Services as the program and needs continue to grow. (Special Education, CIU20 Main Office)~~

Item 10.a was removed from Agenda

- b. **Associate Teacher (1:1)**, effective August 18, 2016 and will continue until student moves or no longer needs service. The Stroudsburg Area SD has requested the intermediate unit provide an Associate Teacher to meet the needs of an individual student as per their IEP. (PHP, Colonial Academy – Dual MD, PHP, following the Pen Argyl SD) Budget Amendment is attached. **ATTACHMENT 13.10.b**
- c. **Teacher (1), Mental Health Worker (1), Associate Teacher (1)**, effective August 18, 2016. This classroom is needed to provide programming for students with emotional disturbances. (ES, Bangor HS, Bangor Area SD) Budget Amendment is attached. **ATTACHMENT 13.10.c**

ADDENDUM - ADD

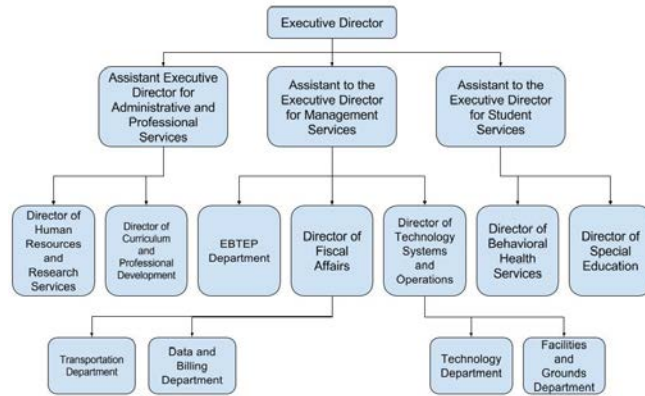
11. Approval – Changes to the Organizational Chart

- a. It is recommended the Board approve the changes to the Organizational Chart as presented, including staff position of: ***Mr. Christopher Wolfel**, Assistant to the Executive Director for Student Services, Level I, at a salary to be at least 5% higher than the highest Level II salary.

* Added Name to item

An employment contract outlining other terms for the Assistant to the Executive Director for Student Services will be presented in August.

b. It is also recommended that Jacquelyn Bartek be appointed as the Director of Special Education at the starting salary for a Level II Director under the current Act 93 Agreement.



12. Approval – Change in Position

It is recommended the Board approve the following change in position:

- a. **Instructional Materials and Technology Services Secretary to Help Desk/Office Assistant (Cluster 3E)**, effective July 5, 2016. This change in position is needed due to the CIU20 Departments' increased need for technology support. (Technology, CIU20 Main Office)

On motion by Mr. Brewer and seconded by Mr. Butz and unanimously passed by voice vote, the Board approved the following Personnel Items (on Agenda) as presented with any additions and/or corrections noted:

On motion by Mr. Huffman and seconded by Mr. Habrial and unanimously passed by voice vote, the Board approved the following Personnel Items (on Addendum) as presented with any additions and/or corrections noted:

14. PERSONNEL ITEMS

IF NECESSARY, THE REASON FOR SUBMISSION FOR BOARD APPROVAL AFTER THE PREVIOUS BOARD MEETING DATE IS PROVIDED.

A. LEAVES OF ABSENCE

It is recommended the Board approve the following Leaves of Absence (without pay and benefits unless otherwise noted):

None at this time

B. RESIGNATIONS

It is recommended the Board accept the following Resignations:

	Name	Position	Effective Date	Reason
1	Dana Anthony	Mental Health Treatment Specialist	August 17, 2016	Other Employment
2	Julie Buskirk	Mental Health Worker	August 18, 2016	Other Employment; Dissatisfaction with wages or conditions; Other reasons
3	Melissa Geisel	Associate Teacher	August 17, 2016	Other Employment
4	Maranda Hammerstone	Substitute Associate Teacher	June 1, 2016	Other Employment
5	Caroline Kovacs	Substitute Teacher	May 28, 2016	Other Reasons
6	Anthony Kuder	Teacher	June 10, 2016	Other Employment; Moving from the Area
7	Betty Ann McInteer	School Psychologist	June 30, 2016	Retirement
8	Danielle Mort	Teacher	June 8, 2016	Other Employment; Dissatisfaction with Wages or Conditions; Moving from the Area; Family or Domestic Reasons
9	Samantha Schaffer	COTA	August 18, 2016	Other Employment
10	Kathie Schoeneberger	Associate Teacher	August 17, 2016	Retirement
11	Sarah Smith	Vision Support Teacher	August 17, 2016	Moving from the area; Other reasons

ADDENDUM – ADD:

12	Christine Lutes	Associate Teacher	May 25, 2016	To accept a MHW position with IU20
----	-----------------	-------------------	--------------	------------------------------------

C. JOB STATUS CHANGES

It is recommended the Board approve the following Job Status Changes:

	Name	Assignment	Salary	Effective
1	Leslie Omdalen	From Full-time Associate Teacher to Transition Coach (Transition, Northampton County, as assigned)	2016-2017 (Cluster 7, Step 3 – HS48/AS) (2015-2016 Salary: \$21,052.75)	August 19, 2016

ADDENDUM – ADD:

2	Jessica Brown	From LTS to Full-time (TPE) Teacher (EI, Colonial Early Learning Center)	Remains the same	July 5, 2016
3	Samantha Moreno	From Full-time Classroom Associate Teacher to Associate Teacher (1:1)	Remains the same	August 19, 2016 and will continue until student moves or no longer needs service

D. APPOINTMENTS

It is recommended the Board approve the following Appointments:

	Name	Assignment	Salary	Effective Date
1	Christopher Baumann	Part-time Teacher (Summer Program) (AltEd, Northampton County Juvenile)	\$35.67/hour (Step 3, BS/BA)	June 17, 2016

		Detention Center, EASD)		
2	Susan Crouthamel	Part-time Teacher (ESY) (TBD, BASD)	\$34.28/hour (Step 1 - BS/BA)	June 23, 2016
3	Barbara Cali	Part-time Associate Teacher (ESY) (East Stroudsburg HS-South, ESASD)	\$11.74/hour (Cluster 7, Step 1 - HS/HQ)	June 23, 2016 (PRC)
4	Isabella DiLauro	Full-time (TPE) Speech Therapist (S&L Impaired Support, Early Intervention, CELC and Itinerant Locations, EASD)	2016-2017 (Step 1 - M) (2015-2016 Salary: \$450,459)	July 6, 2016 (PRC)
5	Emily Doll	Part-time Speech Therapist (ESY) (East Hills MS and Freedom HS, BASD)	\$36.92/hour (Step 1 - M45)	June 22, 2016 (PRC)
6	Emily Doll	Full-time (TPE) Speech Therapist (S&L Impaired Support - School Age, As assigned, BASD and EASD)	2016-2017 (Step 1-M45) (2015-2016 Salary: \$52,057)	August 18, 2016 (PRC)
7	Charlene Dones	Part-time Associate Teacher (ESY) (East Stroudsburg HS-South, ESASD)	\$11.74/hour (Cluster 7, Step 1 - HS/HQ)	June 23, 2016
8	James Ferebee III	Part-time Associate Teacher (ESY) (East Stroudsburg HS-South, ESASD)	\$14.58/hour (Cluster 7, Step 1 - BS/BA)	June 23, 2016 (PRC)
9	Lauren Gundrum	Part-time Speech Therapist (ESY) (East Hills MS and Freedom HS, BASD)	\$35.03/hour (Step 1 - B24)	June 22, 2016
10	Lauren Gundrum	Full-time (TPE) Speech Therapist (S&L Impaired Support-School Age, As assigned, BASD)	2016-2017 (Step 1 - M) (2015-2016 Salary: \$50,459)	August 18, 2016 (PRC)
11	Rebecca Halas	Part-time Teacher (ESY) (East Stroudsburg HS-South, ESASD)	\$41.71 (Step 10 - M)	June 23, 2016 (PRC)
12	Kara Kiska	Part-time Teacher (ESY) (East Stroudsburg HS-South, ESASD)	\$34.28/hour (Step 1 - BS/BA)	June 23, 2016 (PRC)
13	Kristen Lilly	Part-time Teacher (ESY) (TBD, BASD)	\$34.28/hour (Step 1 - BS/BA)	June 23, 2016
14	Kristen Lilly	Part-time Associate Teacher (EI, CELC, BASD)	2016-2017 (Cluster 7A, Step 1 - BS/BA) (2015-2016 Salary: \$16,442.20)	August 18, 2016
15	Lisa Loeser	Part-time Teacher (ESY) (TBD, BASD)	\$35.03/hour (Step 1 - B24)	June 23, 2016 (PRC)
16	Jessica Mowrey	Part-time Teacher (ESY) (East Hills MS, BASD)	\$34.28/hour (Step 1 - BS/BA)	June 23, 2016 (PRC)
17	Karen Peters	Part-time Associate Teacher (ESY) (East Stroudsburg HS-South, ESASD)	\$12.80/hour (Cluster 7, Step 1 - HS48/AS)	June 23, 2016 (PRC)
18	Sarah Russell	Part-time Associate Teacher (ESY) (TBD, BASD)	\$12.80/hour (Cluster 7, Step 1 - HS48/AS)	June 23, 2016
19	Maria Sproat	Part-time Teacher (ESY) (TBD, BASD)	\$34.28/hour (Step 1 - BS/BA)	June 23, 2016
20	Teresa Thompson	Part-time Associate Teacher (ESY) (East Stroudsburg HS-South, ESASD)	\$14.58/hour (Cluster 7, Step 1 - BS/BA)	June 23, 2016 (PRC)
21	Zachary Williams	Part-time Associate Teacher (ESY) (East Stroudsburg HS-South, ESASD)	\$14.58/hour (Cluster 7, Step 1 - BS/BA)	June 23, 2016

ADDENDUM - ADD:

22	Ryan Pysher	Full-time Associate Teacher (ES, Easton MS, EASD)	\$20,552.75 (Cluster 7, Step 1 - BS/BA)	August 18, 2016
23	Jamal Arnaout	Part-time Teacher (ESY, Northampton County Juvenile Detention Center, EASD)	\$35.79/hour (Step 1 - M)	June 17, 2016 (PRC)

24	Molly Cook	Part-time Teacher (ESY, TBD, BASD)	\$34.28/hour (Step 1 – BS/BA)	June 23, 2016 (PRC)
25	Kimberly Ivory	Part-time Teacher (ESY, TBD, BASD)	\$34.28/hour (Step 1 – BS/BA)	June 23, 2016 (PRC)
26	Lorraine Majette	Part-time Teacher (ESY, TBD, BASD)	\$36.16/hour (Step 1 – M15)	June 23, 2016
27	Kimberly Schiffert	Part-time Teacher (ESY, TBD, BASD)	\$36.65/hour (Step 1 – B15)	June 23, 2016
28	Erin Vogel	Part-time Teacher (ESY, TBD, BASD)	\$35.79/hour (Step 1 – M)	June 23, 2016 (PRC)
29	Chelsey Frazier	Part-time Teacher (ESY, East Stroudsburg HS-South, ESASD)	\$34.28/hour (Step 1 – BS/BA)	June 23, 2016 (PRC)
30	Brooke Glaser	Part-time Teacher (ESY, East Stroudsburg HS-South, ESASD)	\$35.03/hour (Step 1 – B24)	June 23, 2016 (PRC)
31	Marisa Griffith	Part-time Teacher (ESY, East Stroudsburg HS-South, ESASD)	\$34.28/hour (Step 1 – BS/BA)	June 23, 2016
32	Heather Lamb	Part-time Teacher (ESY, East Stroudsburg HS-South, ESASD)	\$34.28/hour (Step 1 – BS/BA)	June 23, 2016 (PRC)
33	Karen Rudolfi	Part-time Teacher (ESY, East Stroudsburg HS-South, ESASD)	\$35.79/hour (Step 1 – M)	June 23, 2016
34	Robert Adams	Part-time AT (ESY, TBD, BASD)	\$14.58/hour (Cluster 7, Step 1 – BS/BA)	June 23, 2016 (PRC)
35	Christopher Albright	Part-time AT (ESY, TBD, BASD)	\$12.80/hour (Cluster 7, Step 1 – HS48/AS)	June 23, 2016 (PRC)
36	AnnMarie Birster	Part-time AT (ESY, TBD, BASD)	\$14.58/hour (Cluster 7, Step 1 – BS/BA)	June 23, 2016 (PRC)
37	Danielle Clune	Part-time AT (ESY, TBD, BASD)	\$12.80/hour (Cluster 7, Step 1 – HS48/AS)	June 23, 2016
38	Amelia Colon	Part-time AT (ESY, TBD, BASD)	\$12.80/hour (Cluster 7, Step 1 – HS48/AS)	June 23, 2016 (PRC)
39	Nicole Curtis	Part-time AT (ESY, TBD, BASD)	\$14.58/hour (Cluster 7, Step 1 – BS/BA)	June 23, 2016 (PRC)
40	Nicole Fedor	Part-time AT (ESY, TBD, BASD)	\$14.58/hour (Cluster 7, Step 1 – BS/BA)	June 23, 2016 (PRC)
41	Ronnell Ford	Part-time AT (ESY, TBD, BASD)	\$11.74/hour (Cluster 7, Step 1 – HS/HQ)	June 23, 2016 (PRC)
42	Debra Gross	Part-time AT (ESY, TBD, BASD)	\$14.58/hour (Cluster 7, Step 1 – BS/BA)	June 23, 2016 (PRC)
43	Jaclyn Hahn	Part-time AT (ESY, TBD, BASD)	\$12.80/hour (Cluster 7, Step 1 – HS48/AS)	June 23, 2016
44	Ariane Hilborn	Part-time AT (ESY, TBD, BASD)	\$14.58/hour (Cluster 7, Step 1 – BS/BA)	June 23, 2016 (PRC)
45	Janell Hockin	Part-time AT (ESY, TBD, BASD)	\$14.58/hour (Cluster 7, Step 1 – BS/BA)	June 23, 2016
46	Leah Hoff	Part-time AT (ESY, TBD, BASD)	\$14.58/hour (Cluster 7, Step 1 – BS/BA)	June 23, 2016 (PRC)
47	David Iobst	Part-time AT (ESY, TBD, BASD)	\$14.58/hour (Cluster 7, Step 1 – BS/BA)	June 23, 2016
48	Karen Redmon	Part-time AT (ESY, TBD, BASD)	\$14.58/hour (Cluster 7, Step 1 – BS/BA)	June 23, 2016 (PRC)
49	Sydnee Theadford	Part-time AT (ESY, TBD, BASD)	\$14.58/hour (Cluster 7, Step 1 – BS/BA)	June 23, 2016 (PRC)
50	Elizabeth Weiss	Part-time AT (ESY, TBD, BASD)	\$12.80/hour (Cluster 7, Step 1 – BS/BA)	June 23, 2016 (PRC)

			1 – HS48/AS)	
51	Eartha Yarrell	Part-time AT (ESY, TBD, BASD)	\$11.74/hour (Cluster 7, Step 1 – HS/HQ)	June 23, 2016
52	Stephanie Schubert	Part-time AT (East Hills MS, BASD)	\$14.58/hour (Cluster 7, Step 1 – BS/BA)	June 23, 2016
53	Joanna Aul	Part-time AT (East Stroudsburg HS-South, ESASD)	\$12.80/hour (Cluster 7, Step 1 – HS48/AS)	June 23, 2016 (PRC)
54	Jenne Boyle	Part-time AT (East Stroudsburg HS-South, ESASD)	\$14.58/hour (Cluster 7, Step 1 – BS/BA)	June 23, 2016 (PRC)
55	Stephanie Ciccone-Felmlly	Part-time AT (East Stroudsburg HS-South, ESASD)	\$12.80/hour (Cluster 7, Step 1 – HS48/AS)	June 23, 2016 (PRC)
56	Theresa Clark	Part-time AT (East Stroudsburg HS-South, ESASD)	\$11.74/hour (Cluster 7, Step 1 – HS/HQ)	June 23, 2016 (PRC)
57	Elizabeth Fallick	Part-time AT (East Stroudsburg HS-South, ESASD)	\$11.74/hour (Cluster 7, Step 1 – HS/HQ)	June 23, 2016 (PRC)
58	Jacob Giovannini	Part-time AT (East Stroudsburg HS-South, ESASD)	\$14.58/hour (Cluster 7, Step 1 – BS/BA)	June 23, 2016 (PRC)
59	June Holden	Part-time AT (East Stroudsburg HS-South, ESASD)	\$12.80/hour (Cluster 7, Step 1 – HS48/AS)	June 23, 2016 (PRC)
60	Sharon James	Part-time AT (East Stroudsburg HS-South, ESASD)	\$14.58/hour (Cluster 7, Step 1 – BS/BA)	June 23, 2016 (PRC)
61	Sandra Nurse	\$12.80/hour (Cluster 7, Step 1 – HS48/AS)	\$11.74/hour (Cluster 7, Step 1 – HS/HQ)	June 23, 2016 (PRC)
62	Tess Staples	Part-time AT (East Stroudsburg HS-South, ESASD)	\$14.58/hour (Cluster 7, Step 1 – BS/BA)	June 23, 2016 (PRC)
63	Danielle Vergara	Part-time AT (East Stroudsburg HS-South, ESASD)	\$12.80/hour (Cluster 7, Step 1 – HS48/AS)	June 23, 2016 (PRC)
64	Vianca Rivera Colon	Part-time MHW (Summer PHP) (Colonial Academy, PAASD)	\$18.71/hour (Step 1 – BS/BA)	June 28, 2016
65	Kate Krammes	Part-time MHW (Summer Therapeutic ES Program)	\$20.17/hour (Step 1 – M)	June 27, 2016
66	Ryan Pysner	Part-time AT (Summer Therapeutic ES Program, Colonial Academy, PAASD)	\$14.58/hour (Cluster 7, Step 1 – BS/BA)	June 27, 2016
67	Nicholas Solitario	Part-time Summer Work Force Laborer (Buildings & Grounds, CIU20 Office)	\$10.19/hour	June 14, 2016
68	Christine Lutes	Full-time Mental Health Worker (PHP, Colonial Academy, following PAASD calendar)	\$28,446 (Step 1 – M)	May 26, 2016

E. SUPPLEMENTAL AGREEMENTS TO CURRENT POSITIONS:

It is recommended the Board approve the following Supplemental Agreements to Current Positions:

The following staff to receive their contractual hourly rate (unless otherwise noted), not to exceed 67 hours, to provide services during the Extended School Year Program. Effective June 23, 2016 - July 21, 2016

	Name	Current Position:	ESY Position:	Hourly Rate (if different from current position)
1	Elizabeth Carnation	AT	AT	Contractual Hourly Rate
2	Kelly Sarnowski	Teacher	Teacher	Contractual Hourly Rate

3	April Chalfont	Transition Coach	Teacher	\$34.28/hour
4	Gwen Johnson	Substitute	AT	\$15.01/hour
5	James Litts	AT	AT	Contractual Hourly Rate
6	Agnies Minorczyk	AT	AT	Contractual Hourly Rate
7	Tamara Etienne-Daniel	Substitute	AT	\$14.58/hour
8	Donna Kowzun	AT	AT	Contractual Hourly Rate
9	Jeffrey Moessinger	MHW	MHW	Contractual Hourly Rate
10	Kimberly Dudley	Associate Specialist	AT	\$16.79/hour
11	Robin Martin	TSS	AT	\$14.58/hour
12	Colleen Hauser	Substitute	AT	\$15.37/hour
	Name	Rate	Service	Effective Dates
13	Amanda Devaney (Speech Therapist)	Contractual Hourly Rate. Not to exceed 100 Hours, plus mileage	ESY Speech Therapist	June 23, 2016 – August 18, 2016
14	Jill Baxter (PTA)	Contractual Hourly Rate. Not to exceed 28 hours.	To provide ESY PT services in the home setting associate with the ESY program	June 23, 2016 – August 12, 2016
15	Robin Petley-Huynh (Speech Therapist)	Not to exceed \$500	Mentoring of a new professional (Lauren Gundrum)	August 18, 2016 – August 17, 2017
16	Mason Messinger (Teacher)	Contractual Hourly Rate. Not to exceed 63 hours	Project SEARCH duties	June 14, 2016 – August 18, 2016
17	Stephanie Carbonell (Transition Coach)	Contractual Hourly Rate. Not to exceed 28 hours	Project SEARCH duties	June 14, 2016 – August 18, 2016
18	Jennifer Jones-Baur (Transition Program Specialist)	Contractual Hourly Rate. Not to exceed 30 hours	Project SEARCH duties	June 14, 2016 – August 18, 2016
19	Janine Page (Teacher)	Homebound Rate. Not to exceed 10 hours per week. Plus mileage	To provide homebound instruction to a BASD student	August 29, 2016 – June 30, 2017

ADDENDUM – ADD

20	Allyssa Sirb (Speech Therapist)	Not to exceed \$500	Mentoring of a new professional (Emily Doll)	August 18, 2016 – August 17, 2017
21	Nancy King (Vision/O&M Therapist)	Contractual Daily Curriculum Rate. Not to exceed 5 days	To revise and develop curriculum materials and program guidelines	July 5, 2016 – August 17, 2016
22	Sarah Smith (Vision Teacher)	Contractual hourly rate. Not to exceed 30 hours	To provide services to students that receive hearing and vision during the Early Intervention summer session	July 5, 2016 – July 29, 2016
23	Robin Heckman (Hearing Teacher)	Contractual hourly rate. Not to exceed 10 hours		
24	Emma Stewart (Teacher)	Contractual daily rate. Not to exceed 3 days	To participate in the Governor's Institute Pre-K-3 Grade Performance Program	June 21, 2016 – June 23, 2016
25	Rachel Van Allen (Teacher)			

26	Pamela Schaffer (Educational Audiologist)	Contractual hourly rate. Not to exceed 2 hours	Inservice ESY staff on FM care and use and to insure proper function for a SVSD student	June 23, 2016 – August 18, 2016
27	Donna Adamson (Associate Teacher)	Contractual hourly rate. Not to exceed 67 hours	To work as an Associate Teacher during ESY	June 23, 2016 – July 21, 2016
28	Lani Goins (Substitute)	\$14.58/hour	To work as an Associate Teacher during ESY	June 23, 2016 – July 21, 2016
29	Victoria Huggan (Teacher)	\$22.19/hour	To work as a Mental Health Worker during the Summer PHP	June 28, 2016 – August 4, 2016
30	Patti Bower (Teacher)	\$18.71/hour		
31	Marlon Worthy (Truancy Intervention Specialist)	\$18.81/hour		

F. CONTRACTS FOR PAYMENT

It is recommended the Board approve the following Contracts for Payment and that the Executive Director and Board Secretary be authorized to execute same on behalf of, and as agent for, the Board of Directors of CIU-20:

Attachment	Name	Service	Rate	Effective Dates
F.1	Backyard Tree House	Will provide Speech and Language Therapy for Early Intervention students	\$67/hour, for 240 hours. Not to exceed \$16,080, plus mileage	July 1, 2016 – December 31, 2016
F.2	Center for Developmental Disabilities	Will provide Early Intervention services and programs for young children in Pike County as outlined in Contract	Not to exceed \$374,375	July 1, 2016 – June 30, 2017
F.3	Dr. Harold Heckman	Amendment: to provide Psychiatric services in the CIU20 School-Based Outpatient Program, originally approved on May 27, 2015 is amended as follows: Amend the contract to include \$11,550 for 77 additional hours of service. Contract not to exceed \$71,550		
F.4	Dr. Harold Heckman	Will provide Psychiatric services, as outlined, in the CIU20 School-Based Outpatient Program and PHP	\$150/hour, as outlined. Not to exceed \$165,600	July 1, 2016 – June 30, 2017
F.5	Hobsons, Inc.	Will provide a one-day workshop for Nonpublic School Administrators, Guidance Counselors and Secretaries	\$2,000 plus expenses. Not to exceed \$2,430	July 1, 2016 – October 31, 2016
F.6	Invo Health Care Associates	Will provide a COTA and/or a PTA for school age students to meet mandates	\$49/hour. Not to exceed \$58,800	August 17, 2016 – June 30, 2017
F.7	King, Spry, Herman, Freund & Faul, LLC	Ms. Keely Collins will present a training session, “Joint Employership” at the Summer Administrative Workshop	Not to exceed \$450	July 28, 2016
F.8	Chris Manno	Will present a breakout session, “Leadership in Motion: Engaging Stakeholders” at the Summer Administrative Workshop	\$1,500, plus expenses. Not to exceed \$2,000	July 28, 2016
F.9	Maxim Healthcare	Will provide an RN or LPN in the absence	RN: \$55/hour	July 1, 2016 – June

		of a full-time nurse at CELC	LPN: \$50/hour. Not to exceed \$10,000	30, 2017
F.10	Maxim Healthcare	Will provide an RN or LPN in the absence of a full-time nurse at Colonial Academy	RN: \$50/hour LPN: \$47.50/hour. Not to exceed \$18,200	2016-2017 school year
F.11	Vicki Miller	Will provide Psychiatric services, as outlined, in the CIU20 School-Based Outpatient Program	\$98/hour, for 800 hours. Not to exceed \$78,400	July 1, 2016 – June 30, 2017
F.12	Montgomery County IU23	Will provide speech services for a student attending daycare in the CIU20 catchment area	\$38.50/session, for 10 sessions. Not to exceed \$385	July 1, 2016 – September 10, 2016
F.13	Northampton County Fire School	Will train the staff at Colonial Academy on fire safety and evacuation procedures	Not to exceed \$1,000	August 22, 2016 – August 24, 2016
F.14	Pen Argyl Area SD	Will provide lunches for Colonial Academy	\$2.55/lunch. Not to exceed \$80,000	2016-2017 school year
F.15	Amy Pidgeon	Will provide occupational therapy/social skills services to students	\$33.79/hour, for 1,200 hours. Not to exceed \$40,548, plus mileage	August 19, 2016 – June 30, 2017
F.16	Rx Home Care, Inc.	Will provide an RN or LPN in the absence of the full time nurse at Colonial Academy	As outlined. Not to exceed \$6,162	2016-2017 school year
F.17	Schoology, Inc.	Will work with CIU20 to provide a digital learning environment for the following school districts: Nazareth Area SD (\$20,988) Northampton Area SD (\$19,467) Saucon Valley SD (\$9,000)	Not to exceed \$49,455	July 1, 2016 – June 30, 2017
F.18	Dr. Steven Shive	Will perform training for CIU20 employees to receive certifications of American Heart Association Heartsaver, First Aid, CPR, and AED	\$25/person. Not to exceed \$11,000	July 29, 2016 – August 26, 2016
F.19	SPARKLE Maintenance, Inc.	Will provide cleaning services & supplies for a classroom at the former Polk Elementary School	\$35/week, for 35 weeks. Not to exceed \$1,225	July 1, 2016 – June 30, 2017
F.20	Erica Stone	Will be reimbursed for days that she provides transportation to Scranton School for the Deaf and Hard of Hearing	\$82.62/day. Not to exceed \$1,156.68	July 5, 2016 – July 22, 2016
F.21	Erica Szwast	Will provide physical therapy services for school age students	\$59.39/hour, for 520 hours. Not to exceed \$30,882.80, plus mileage	August 17, 2016 – June 30, 2017
F.22	TuWay Communications	Will provide equipment and airtime, installation and maintenance for radios used by the Transportation Department	\$2,464.08/month, for 12 months. Not to exceed	July 1, 2016 – June 30, 2017

			\$29,568.96	
F.23	Dr. Martha Turnberg	Will provide Psychiatric services as outlined in contract	Not to exceed \$432,400	July 1, 2016 – June 30, 2017
F.24	Janine Wargo	Will provide Psychological services as outlined in contract	\$365/day, for 140 hours. Not to exceed \$51,100, plus mileage	August 1, 2016 – June 30, 2017
F.25	Western PA School for the Deaf	Will provide a summer program for three current students of the Scranton School for the Deaf and Hard of Hearing	\$1,900/student. Not to exceed \$5,700	July 1, 2016 – July 22, 2016
F.26	Zito Media Communications, LLC	Amendment: To provide phone service to LV Academy Regional Charter School, originally approved on April 27, 2016 is amended as follows: Amend the contract to include an additional \$36/month due to a change in the number of phones. Contract not to exceed \$68,165.80		

ADDENDUM - ADD

F.27	Delta-T Group	Will provide Paraprofessional services to CIU20 students	\$19/hour for a paraprofessional and \$20/hour for a Bachelor level. Not to exceed \$24,000	May 12, 2016 – May 11, 2017
F.28	Jane Schrack	Will provide medical authorization services for the School Based Access Program (SBAP)	\$32/hour, for 500 hours. Not to exceed \$16,000	July 1, 2016 – June 30, 2017

G. REVENUE GENERATING CONTRACTS FOR SERVICE

It is recommended the Board approve the following Revenue Generating Contracts for Service and that the Executive Director and Board Secretary be authorized to execute same on behalf of, and as agent for, the Board of Directors of CIU-20:

Attachment	Name	Service	Rate	Effective Dates
G.1	Bangor Area SD	CIU20 will complete eRate filings and monitor eRate compliance for the Bangor Area SD	\$55.38/hour. Not to exceed \$2,769	July 1, 2016 – June 30, 2017
G.2	Bethlehem Area SD	CIU20 TAC Staff will provide Leadership Literacy Training at Lincoln Elementary in BASD	\$900/day, for up to 30 days. Not to exceed \$27,000	September 1, 2016 – December 22, 2016
G.3	Bethlehem Area Vocational-Technical School	CIU20 will provide hosted firewall, as outlined, for the BAVTS	\$484.34/month, for 60 months. Not to exceed \$29,060.40	July 1, 2016 – June 30, 2021
G.4	Capital Area IU 15	Amendment: to provide funding for an instructional mentor as part of the PA Institute for Instructional Coaching (PIIC), originally approved on October 28, 2015 is amended as follows: Amend the contract to include an additional \$1,000 for 2 days of service and \$1,800 for travel reimbursement. Not to exceed \$37,800		
G.5	Career Institute of Technology	CIU20 will provide online professional development for staff with ParaEducator Learning Network Subscription.	Not to exceed \$455	August 1, 2016 – July 31, 2017
G.6	Career Technology Center of Lackawanna	CIU20 will provide network consulting	\$77.18/hour. Not to exceed \$19,295	July 1, 2016 – June 30, 2018

	County			
G.7	Delaware Valley SD	In collaboration with Transperfect, CIU20 will provide remote interpreting services to students and staff	\$20/month, for 10 months. Not to exceed \$200, plus a fee of \$1.30/minute for interpreting services	August 31, 2016 – June 30, 2017
G.8	Delaware Valley SD	CIU20 will provide a Behavioral Consultant for services as outlined	Not to exceed \$79,395	2016-2017 school year
G.9	East Stroudsburg Area SD	In collaboration with Transperfect, CIU20 will provide remote interpreting services to students and staff	\$20/month, for 10 months. Not to exceed \$200, plus a fee of \$1.30/minute for interpreting services	August 31, 2016 – June 30, 2017
G.10	East Stroudsburg Area SD	CIU20 will provide literacy coaching for East Stroudsburg's Head Start partners	\$900/day, for 7 days. Not to exceed \$6,300	September 1, 2016 – December 22, 2016
G.11	Easton Area SD	CIU20 will provide online professional development for staff with ParaEducator Learning Network Subscription	Not to exceed \$2,100	August 1, 2016 – July 31, 2017
G.12	Fleetwood Area SD	CIU20 will provide hosting and support of Moodle Services	Not to exceed \$800	July 1, 2016 – June 30, 2017
G.13	Head Start – Community Services for Children, Inc.	Head Start will pay a portion of the utilities and building costs at the Colonial Early Learning Center due to their occupancy of four classrooms	\$250/month, for 12 months. Not to exceed \$3,000	July 1, 2016 – June 30, 2017
G.14	Lehigh Valley Academy Regional Charter School	CIU20 will complete eRate filings and monitor eRate compliance	\$55.38/hour. Not to exceed \$3,322.80	July 1, 2016 – June 30, 2017
G.15	Lehigh Valley Academy Regional Charter School	Amendment: to provide and maintain the phone system, original approved on March 23, 2016 is amended as follows: Amend the contract increasing the monthly rate from \$2,779.40 to \$3,247.40. Contract not to exceed \$195,644		
G.16	Lehigh Valley Charter HS for the Arts	In collaboration with Transperfect, CIU20 will provide remote interpreting services to students and staff	\$20/month, for 10 months. Not to exceed \$200, plus a fee of \$1.30/minute for interpreting services	August 31, 2016 – June 30, 2017
G.17	Lehigh Valley Dual Language School	Amendment: to provide technical service for wireless internet originally approved on April 27, 2016, is amended as follows: Amend the contract to include Help Desk Technical Services as requested by the LV Dual Language School at a rate of \$55/hour. Contract not to exceed \$38,600		
G.18	Nazareth Area SD	CIU20 will provide the Nazareth Area SD with Schoology, a digital learning environment	Not to exceed \$23,320	July 1, 2016 – June 30, 2017
G.19	Nazareth Area SD	In collaboration with Transperfect, CIU20 will provide remote interpreting services to students and staff	\$20/month, for 10 months. Not to exceed \$200, plus a fee of \$1.30/minute for interpreting services	August 31, 2016 – June 30, 2017

G.20	Northampton Area SD	CIU20 will provide the Northampton Area SD with Schoology, a digital learning environment	Not to exceed \$21,630	July 1, 2016 – June 30, 2017
G.21	Northampton Area SD	CIU20 will provide an EI teacher to perform assessments to all district students in our IU classroom who attend George Wolf Elementary	\$100/day, for 18 days. Not to exceed \$1,800	2016-2017 school year
G.22	Pen Argyl Area SD	CIU20 will complete eRate filings and monitor eRate compliance	\$55.38/hour. Not to exceed \$1,384.50	July 1, 2016 – June 30, 2017
G.23	Pen Argyl Area SD	CIU20 will provide online professional development for staff with ParaEducator Learning Network Subscription	Not to exceed \$338	August 1, 2016 – July 31, 2017
G.24	Pleasant Valley SD	In collaboration with Transperfect, CIU20 will provide remote interpreting services to students and staff	\$20/month, for 10 months. Not to exceed \$200, plus a fee of \$1.30/minute for interpreting services	August 31, 2016 – June 30, 2017
G.25	Pocono Mountain SD	CIU20 will provide an Itinerant Special Education Teacher to provide direct service to students within the Autism Spectrum Disorder as outlined	Not to exceed \$88,187	2016-2017 school year
G.26	Pocono Mountain SD	In collaboration with Transperfect, CIU20 will provide remote interpreting services to students and staff	\$20/month, for 10 months. Not to exceed \$200, plus a fee of \$1.30/minute for interpreting services	August 31, 2016 – June 30, 2017
G.27	Saucon Valley SD	CIU20 will provide the Saucon Valley SD with Schoology, a digital learning environment	Not to exceed \$10,000	July 1, 2016 – June 30, 2017
G.28	St. Anne School	CIU20 will provide Technology Consulting on an as needed basis	\$85/hour. Not to exceed \$12,750	July 1, 2016 – June 30, 2017
G.29	Stroudsburg Area SD	In collaboration with Transperfect, CIU20 will provide remote interpreting services to students and staff	\$20/month, for 10 months. Not to exceed \$200, plus a fee of \$1.30/minute for interpreting services	August 31, 2016 – June 30, 2017
G.30	Stroudsburg Area SD	CIU20 will provide online professional development for staff with ParaEducator Learning Network Subscription	Not to exceed \$2,100	August 1, 2016 – July 31, 2017
G.31	Wilson Area SD	In collaboration with Transperfect, CIU20 will provide remote interpreting services to students and staff	\$20/month, for 10 months. Not to exceed \$200, plus a fee of \$1.30/minute for interpreting services	August 31, 2016 – June 30, 2017
G.32	Wilson Area SD	CIU20 will provide online professional development for staff with ParaEducator Learning Network Subscription	Not to exceed \$598	August 1, 2016 – July 31, 2017

ADDENDUM – ADD:

G.33	Bethlehem Area SD	CIU20 will provide (3) Mental Health Workers in Bethlehem Area SD Emotional Support classes located at Liberty HS, Freedom HS and Broughal MS	Not to exceed \$164,775	2016-2017 school year
-------------	-------------------	---	-------------------------	-----------------------

G.34	Bethlehem Area SD	CIU20 will provide a Mental Health Treatment Specialist to work in Bethlehem Area SD Emotional Support classes located at Liberty HS, Freedom HS and Broughal MS one day per week at each location	Not to exceed \$47,640.00	2016-2017 school year
G.35	Northampton Area SD	CIU20 will provide mental health supportive services to special education and at-risk students in the Northampton Area SD two days per week	Not to exceed \$31,755.00	2016-2017 school year

H. SUBSTITUTE LISTS

It is recommended the Board approve placement of the following individuals on the Substitute Lists indicated as per the effective dates as noted:

1. Substitute Teachers

None at this time			
-------------------	--	--	--

2. Substitute Associate Teachers

None at this time			
-------------------	--	--	--

3. Substitute Transportation

None at this time			
-------------------	--	--	--

4. Substitute Mental Health Treatment Specialists

None at this time			
-------------------	--	--	--

5. Substitute Custodian

None at this time			
-------------------	--	--	--

I. PROVIDER 50 LISTS

It is recommended the following individuals be placed on the Provider 50 List in the areas and on the effective dates listed:

a. Behavior Specialist/Consultant – Master’s

None at this time	
-------------------	--

b. Mobile Therapist

None at this time	
-------------------	--

c. Therapeutic Staff Support

None at this time	
-------------------	--

d. Therapeutic Staff Support Aide

None at this time	
-------------------	--

J. MOBILE THERAPIST - OUTPATIENT PROGRAM

It is recommended the following individuals be placed on the Mobile Therapist - Outpatient Program List as per the effective dates listed:

None at this time	
-------------------	--

K. INTENSIVE IN-HOME SERVICES

It is recommended the following individuals be placed on the Intensive In-Home Services List in the areas and on the effective dates listed:

a. Behavior Analyst

None at this time	
-------------------	--

a. Behavioral Technician

None at this time	
-------------------	--

15. NEW BUSINESS –

- Dr. Baird announced that this is Susan Baxter’s last meeting. Susan said it was a tough decision for her, but her decision to resign from the board is due to time restraints.
- Dr. Baird attended the Special Olympic Banquet and spoke with numerous parents and friends.
- Mr. Clarke shared with the board, a PSBA platform proposal that the SASD board submitted. It calls for basic education funding to be driven through the new Fair Funding Formula. He asked for anyone attending the assembly as a delegate, to please consider voting for this proposal.
- Dr. Baird congratulated Mr. Wolfel on his new appointment this evening and Mr. Wolfel thanked everyone for their support.

16. COMMENTS FROM VISITORS (Courtesy of the Floor) – There were no visitors**17. MOTION TO ADJOURN** - There being no further business, the meeting adjourned at 8:40 p.m. on motion by Mr. Wunder and seconded by Ms. Woods.

The next meeting of the Colonial Intermediate Unit 20 Board of Directors is scheduled for Wednesday, August 24, 2016, beginning at 7:30 p.m.

Respectfully Submitted,

Dawn M. Hales Secretary to the Board